



-58 °F, UP TO 17,405 PSI
QUALITY MADE IN GERMANY



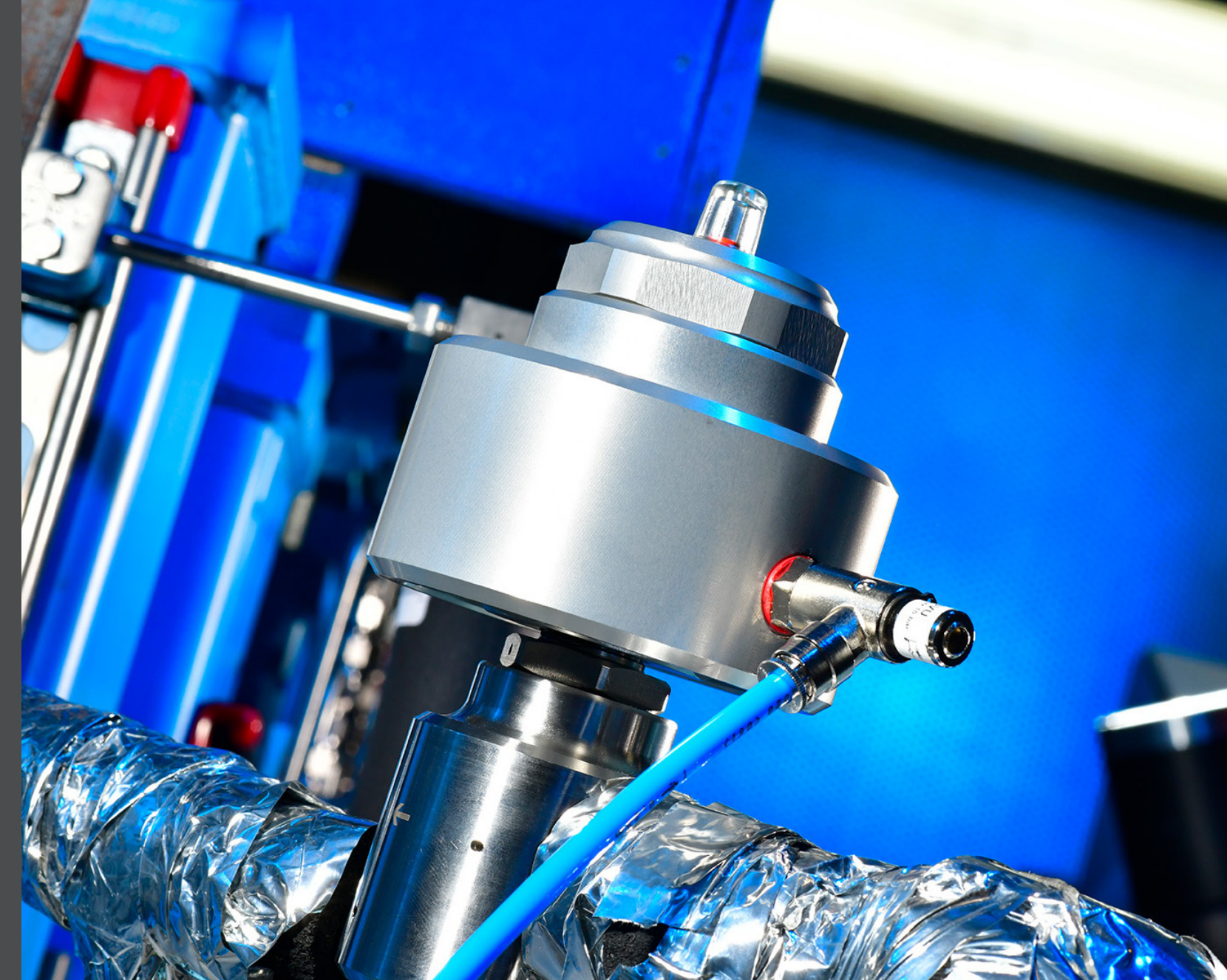
**GSR Ventiltechnik
GmbH & Co. KG**

Im Meisenfeld 1
D-32602 Vlotho

P +49 5228 779-0 F -190
info@ventiltechnik.de

www.gsrvalves.com

The GSR logo is a registered trademark of GSR Ventiltechnik GmbH & Co. KG
Original products may differ from the product photos shown due to different materials, etc.
Errors and omissions excepted.
GSR-001-BR-EN-US-12-2021



TESTED VALVE SOLUTIONS FOR
HYDROGEN APPLICATIONS

Engineering . Valves . Solutions .

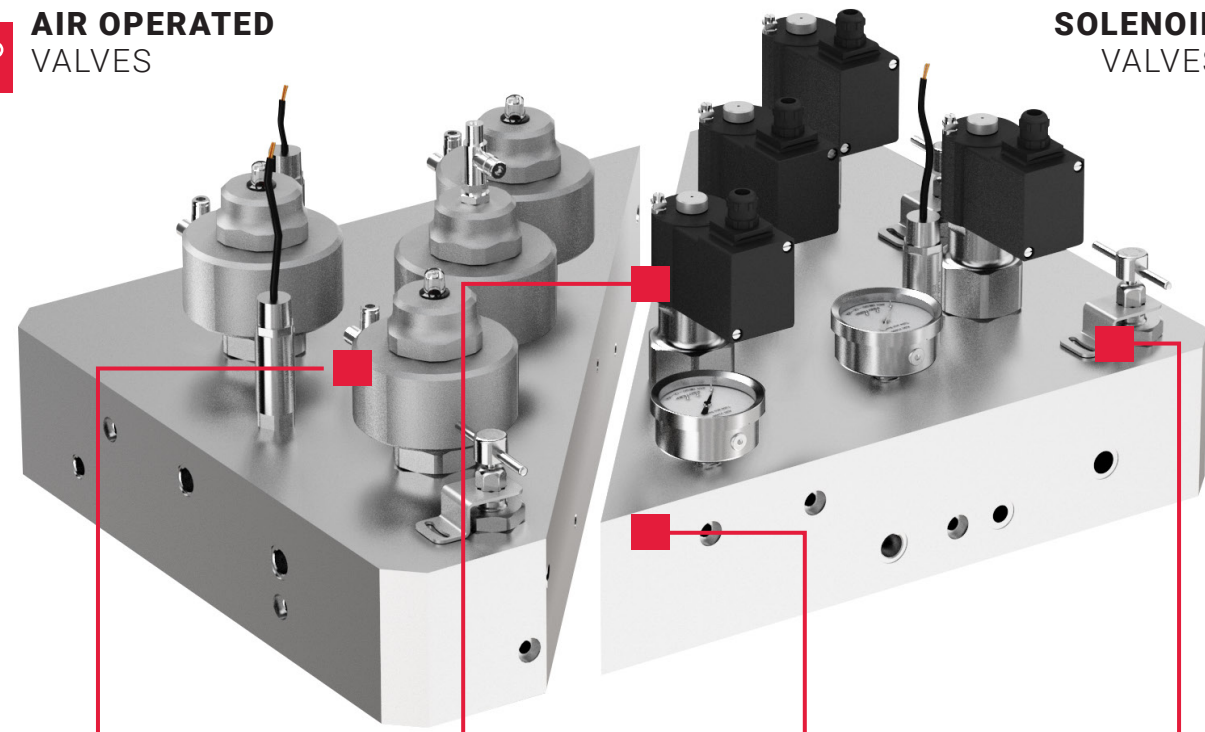


VALVE BLOCKS FOR HYDROGEN APPLICATIONS



AIR OPERATED VALVES

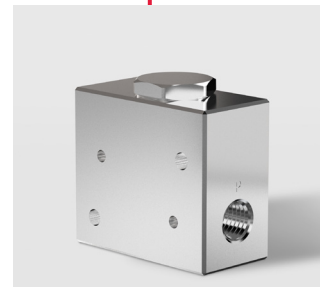
SOLENOID VALVES



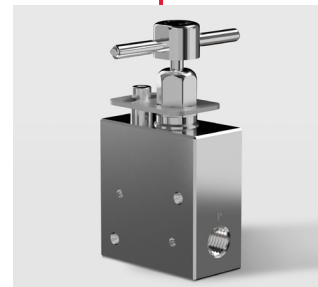
Series 8/100-1W



Series R 3/071-1W



Series 17-1W



Series 13-1W

CUSTOMISED SOLUTIONS

Beyond single valves our strength is to develop customised block solutions. You have the requirement, we deliver the solution! No matter whether you are looking for pneumatic and/or solenoid valves, we will work with you to develop the optimal block solution for you. Of course, we also integrate sensors and filters according to your specifications and thus achieve a further reduction of potential leakage points. Special acceptance reviews and special tests are also possible by agreement. GSR stands for innovative R&D & manufacturing in Germany with 100% testing for function and tightness! Please contact us!



SOLENOID VALVES



Series 55-1W



Series 75HD-1W

Description	2/2-way solenoid valve	3/2-way solenoid valve
Seat diameter	DN0.5 - DN6	DN1 - DN5
Connection size	G1/8 - G1/2	G1/8-G1/2
Function	NC/NO	NC/NO
Pressure range	0-7,252 psi	0-4,351 psi
ATEX temp. range	-40 °F / +140 °F	-22 °F / + 140 °F



Series 3/071-1W



Series 2/529-1W

Description	2/2-way solenoid valve	2/2-way solenoid valve
Seat diameter	DN8	DN12 - DN50
Connection size	G1/4 - G1/2	n/a
Function	NC	NC/NO
Pressure range	73-14,504 psi	15-6,527 psi
ATEX temp. range	-40 °F / +140 °F	-17 °F / +140 °F

Thread types: BSP, NPT, Autoclave (other thread type on request)



AIR OPERATED VALVES



Series 8/100-1W



Series 2/529PN-1W

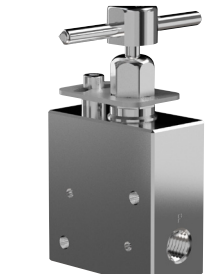


Series 63

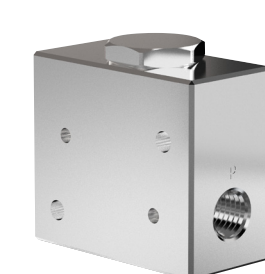
Description	2/2-way pressure controlled	2/2-way pressure controlled	2/2-way pressure controlled
Seat diameter	DN1 - DN8	DN12 - DN50	DN13 - DN45
Connection size	G1/4 - G1/2	G1/2-G2	G1/2 - G2
Function	NC/NO/DW	NC/NO	NC/NO/DW
Pressure range	0-17,405 psi	15-8,702 psi	0-580 psi
ATEX temp. range	-40 °F / +176 °F	-40 °F / +176 °F	-40 °F / +176 °F



ACCESSORIES



Series 13-1W



Series 17-1W

Description	Hand operated	Check valve
Seat diameter	DN2 - DN8	DN2 - DN8
Connection size	G1/4 - G1/2	G1/4-G1/2
Pressure range	0-14,504 psi	0-14,504 psi
ATEX temp. range	-58 °F / +176 °F	-58 °F / +176 °F